

Kent Music Summer School 2024

Thursday 11th - Monday 29th July
Benenden School, Cranbrook





"Summer school is truly wonderful. Year after year the dedicated staff work tirelessly to provide a fantastic and confidence boosting experience for our children." - Parent, KMSS 2023

Contents

Welcome	4	Summer Strings	18
Course Timetable	5	Jazz	20
Wind Band	6	Song Writing	22
Music Explorers	8	Summer Singing	24
Symphony Orchestra	10	A Day at KMSS	26
Orchestra Experience Day ...	12	Meet County Groups	28
Musical Theatre	14	FAQs	30
Piano Course.....	16	How to Apply	34

Welcome

"As Manager for the Kent Music Summer School for over 30 years it gives me pleasure to share what Kent Music has on offer for our 76th Summer School at the most beautiful Benenden School.

Benenden School provides outstanding facilities and allows attendees to flourish in an unrivalled atmosphere of encouragement, expertise and enjoyment. For many it has become an annual event not to be missed where they can make friends with students who have similar interests.

The Summer School continues to expand its portfolio of courses on offer and new for 2024 is a much-requested piano course. As with all our courses, we're expecting this to be popular, so please register as soon as possible!

With an amazing team of staff to support you right from your enquiry through to attendance, we look forward to welcoming you to the Kent Music Summer School in July 2024. As always, if you have any questions that are not answered in this brochure please get in touch and we will be happy to help.

Join us to help keep music live, and book early to avoid disappointment!"

Phill Hyde

Manager, Kent Music Summer School



Course Timetable

July
2024

THURS 11	FRI 12	SAT 13	SUN 14	MON 15	TUES 16	WEDS 17	THURS 18	FRI 19	SAT 20
-------------	-----------	-----------	-----------	-----------	------------	------------	-------------	-----------	-----------

SYMPHONY
ORCHESTRA

EXP DAY

MUSICAL THEATRE

PIANO

SUN 21	MON 22	TUES 23	WEDS 24	THURS 25	FRI 26	SAT 27	SUN 28	MON 29
-----------	-----------	------------	------------	-------------	-----------	-----------	-----------	-----------

SYMPHONY ORCHESTRA

SUMMER STRINGS

SUMMER SINGING

MUSICAL
THEATRE

JAZZ

JUNIOR

PIANO

SONG WRITING

ADVANCED

MIXED LEVEL

Wind Band

The Wind Band course is designed for woodwind, brass and percussion players with some experience. Players will practice and perform with others in a large ensemble under the expert guidance of wind band professionals.

During sectional and full rehearsals, players will explore a broad range of music, including arrangements of well-known and more traditional wind band repertoire.

The course is perfect for young players looking to develop their technique and enhance their ensemble playing skills in a relaxed and supportive atmosphere.

Thursday 11th – Tuesday 16th July

- **Age:** 8-19 years
- **Level:** Grades 2+
- **Fee:** £420 (Financial Assistance Available)
- **Free performance:** Tuesday 16th July

“My child had an absolutely amazing time on the wind band course & was buzzing for days!”

[**Click Here**](#)
[**to apply**](#)



Music Explorers

The Music Explorers course is ideal for all young instrumentalists at the start of their musical journey. It's perfect for players who may have experienced whole class instrumental lessons at school, or who have had instrumental lessons for just a few months but have had little or no ensemble experience.

The course encourages players to take the next step in their musical journey by playing in a multi-instrument ensemble. They will make music with others of a similar age, experience and ability in a fun, friendly and supportive atmosphere.

Please contact kmss@kent-music.com when you make your application if you would like us to provide an instrument.

Saturday 13th – Sunday 14th July

- **Age:** 8 - 13 years
- **Level:** Beginner to Grade 2
- **Fee:** £140 (Financial Assistance Available)
- **Free performance:** Sunday 14th July

"My children had an incredible weekend...they loved playing as part of an ensemble, really enjoyed the social side of things and it was clear to me what a confidence boost the concert was for them all as young musicians."

[Click Here](#)
[to apply](#)



Symphony Orchestra

This course provides the opportunity for more advanced musicians to play in a full symphony orchestra.

Players benefit from expert tuition and guidance from professional orchestral players. The course emphasises development of technique and the musical interpretation of orchestral repertoire.

Repertoire will cover the classics of Symphony Orchestra pieces. This may expand to include music from shows or films to give players experience in a variety of styles.

The course culminates with a performance to family and friends in the impressive Centenary Hall at Benenden.

Thursday 18th – Tuesday 23rd July

- **Age:** 8 - 19 years
- **Level:** Grades 5+
- **Fee:** £420 (Financial Assistance Available)
- **Free performance:** Tuesday 23rd July

"My child thoroughly enjoyed the music camp! Thank you for organizing this wonderful event. We are so moved when we saw their performance - definitely amazing!"

[**Click Here**](#)
[**to apply**](#)



Symphony Orchestra Experience Day

This course is an ideal opportunity for orchestral instrument players to have a taste of what the next stage of their musical journey could be!

During the day, students will play alongside members of the KMSS Symphony Orchestra. They will receive guidance from the course conductor and tutors. The day will allow them to play in a full symphony orchestra in a fun, relaxing, and supportive environment.

The day is designed for the following instruments:

Violin, Viola, Cello, Double Bass, Flute, Clarinet, Oboe, Bassoon, French Horn, Trumpet, Trombone, Tuba, Orchestral Percussion

This is not a residential course. However attendees will enjoy all the benefits of Benenden - including the fantastic food! Places are limited, so we strongly recommend that you book your place early to avoid disappointment.

Saturday 20th July

- **Age:** 11 - 19
- **Level:** Grade 4+
- **Fee:** £15 (Financial Assistance Available)
- Lunch and refreshments provided

"My child really enjoyed the sessions with the orchestra and was excited to do a full residential course next."

[**Click Here**](#)
[**to apply**](#)



Musical Theatre

Sing, dance, act and have fun – the key elements of this very popular five-day course.

Repertoire is selected from rock opera, contemporary and concept musicals, jukebox and light opera.

Performers are encouraged to experiment with a wide variety of singing and performance styles. The course includes workshops on physical theatre, improvisation and audition techniques. A must for all Musical Theatre enthusiasts!

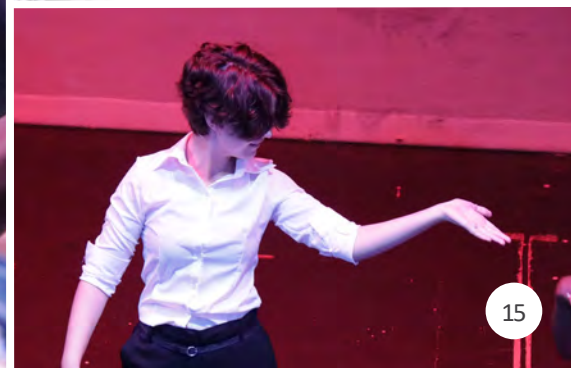
Share the experience at the end of course performance in the wonderfully equipped Benenden School Theatre.

Thursday 18th – Monday 22nd July

- **Age:** School years 7+
- **Level:** Open to all levels, no experience required
- **Fee:** £350 (Financial Assistance Available)
- **Free performance:** Monday 22nd July

"My child had an amazing time, and it was wonderful to see his confidence on stage during the performance."

[**Click Here**](#)
[**to apply**](#)



Piano

Experience ensemble playing at our new piano course!

Perfect for intermediate learners, this course gives participants a great mix of duet playing, performance skills, and technique improvement.

Enjoy playing piano with others, work on your pieces, and explore music beyond grades. Participants will enjoy a supportive and varied learning space with personal and group practice.

We welcome all passionate players in Grades 4-6. All materials and instruments will be provided. However, we encourage participants to bring any pieces they are currently working on.

The course ends with an informal performance where participants will showcase their skills and share what they have learnt.

Spaces are limited so we encourage early booking.

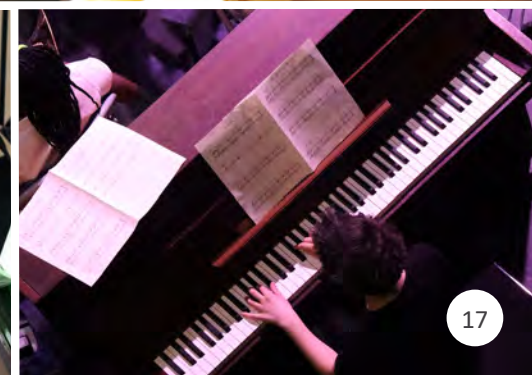
Saturday 20th – Sunday 21st July

- **Age:** School year 7+
- **Level:** Grades 4 - 6
- **Fee:** £140 (Financial Assistance Available)
- **Free performance:** Sunday 21st July

"Thank you for the great opportunity to explore music. My child thoroughly enjoyed it."

[Click Here](#)
[to apply](#)

New for 2024!



Summer Strings





This course is perfect for violin, viola, cello and double bass players looking to develop their ensemble playing skills in a fun and friendly atmosphere!

Participants will be placed in one of two string orchestras depending on their experience and ability. Players will benefit from sectional and full rehearsals with expert tutors. Course members will also come together to form a choir.

The course will support improving overall technique and enhancing musical development and understanding.

Players will perform for family and friends at the end of course performance in the impressive Centenary Hall at Benenden.

Wednesday 24th – Friday 26th July

-  **Age:** 8 - 19 years
-  **Level:** Grades 1 - 5
-  **Fee:** £210 (Financial Assistance Available)
-  **Free performance:** Friday 26th July

"My son had a brilliant time, he loved the food, friendly staff, the school and the activities."

[Click Here](#)
[to apply](#)



Jazz

This course gives players the opportunity to explore a range of jazz styles in both small and large groups.

Players are encouraged to contribute to the creative process and are given freedom to experiment and develop improvisation techniques supported all the way by professional jazz musicians.

The course culminates with a performance to family and friends, highlighting a selection of the styles and genres that participants have experienced whilst on course.

All instruments are welcome, as long as you're of the right standard. However, the course is tailored for brass, wind and rhythm section instruments specifically.

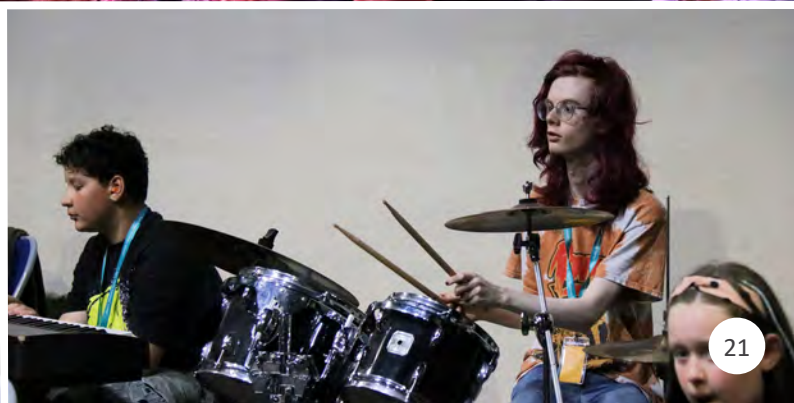
Please note some instrument places (such as rhythm section places) are limited on this course. Early booking is strongly encouraged to avoid disappointment.

Wednesday 24th – Friday 26th July

- **Age:** 8 - 19 years
- **Level:** Grades 2+
- **Fee:** £210 (Financial Assistance Available)
- **Free performance:** Friday 26th July

"My child loved his time on the Jazz course, meeting like-minded people and playing music all day, he had a blast."

[Click Here](#)
[to apply](#)



Song Writing

This course provides the opportunity for participants of all experience levels to develop their song writing skills. Participants will work individually and collaboratively under the guidance of song writing experts.

The focus is on how contemporary and modern songs are structured and put together and what makes them successful. Support and advice will be given to demystify lyric writing and arrangement techniques.

Participants will have the freedom to experiment with different musical textures and voicings. Live instruments will be incorporated, although you don't need to play to have a valuable experience.

Participants will share their creations in a concert for family and friends at the end of the course.

Wednesday 24th – Friday 26th July

- **Age:** School year 7+
- **Level:** All levels welcome, no experience required
- **Fee:** £210 (Financial Assistance Available)
- **Free performance:** Friday 26th July

“Our son had a wonderful time and can’t wait to come back next year “

[**Click Here**](#)
[**to apply**](#)



Summer Singing

Enthusiastic young singers can take their singing to the next level by singing with like-minded young people from across the county.

This course is a lot of fun and is led by experienced professionals who are skilled at working with this age group.

Students will sing accessible and engaging music in a variety of styles and will learn to sing in unison and in parts, including rounds.

Saturday 27th – Monday 29th July

- **Age:** 8 - 13 years
- **Level:** All levels welcome, no experience required
- **Fee:** £210 (Financial Assistance Available)
- **Free performance:** Monday 29th July

"My daughter gave the course 10/10. Fun, friendly teachers and a busy itinerary along with amazing food made this a very enjoyable experience all round."

[Click Here](#)
[to apply](#)



A Day at KMSS

Course timetables will be issued when you arrive.

Below is an example of what to expect at a day on course.

8:00am	Breakfast
8:50am	Daily messages (short meeting for students and staff)
9:10am	Music session
11:00am	Refreshments
11:30am	Music session
1:00pm	Lunch
1:45pm	Organised social and sports activities and free time
3:00pm	Music session
4:00pm	Refreshments
4:30pm	Music session
6:00pm	Dinner
7:00pm	Music session
8:00pm	Refreshments
8:30pm	Organised social and sports activities and free time
9:15 - 10:15pm	Bedtime - times vary by age

During free time, the students can choose to join organised activities, play music in smaller groups they have arranged themselves or simply relax on their own or with friends.

Students can relax in the grounds or in the boarding house common room where a TV and age-appropriate DVDs are available.





Meet County Groups

The KMSS courses are not the only music courses Kent music organises at Benenden School during the summer.

Kent Music also run three county groups who meet during July and August. Kent Youth Wind Orchestra and Kent Youth Choir summer courses run alongside KMSS which offers a great opportunity for students to see and hear the advanced groups in action, get some tips and be inspired.

Our county groups represent the best Kent has to offer in youth music ensembles, and work with experienced professional tutors and conductors to develop their skills and perform at concerts throughout the year.

We are very proud that many of our county group members move on to further advance their music studies at college, university as well as into national music groups such as the National Youth Wind Orchestra of Great Britain, National Youth Choirs of Great Britain and National Youth Orchestra.

Many of our group members started their journeys to be top young musicians in the county right here at Kent Music Summer School.

From Summer Strings to KCYO, song writing to KYC, or Music Explorers to KYWO , starting at Summer School can lead to amazing places!





Kent Youth Wind Orchestra (KYWO)

KYWO is for woodwind, brass and percussion players in year 7 and above (maximum age 19) who have reached a minimum standard of grade 6 on their instrument. Their summer course runs alongside the KMSS Wind Band and Music Explorers courses.

Kent Youth Choir (KYC)

KYC is for singers covering the full vocal range in year 9 and above (maximum age 21). Although sight singing is not a pre-requisite, it is a skill that each member acquires and develops over time. The KYC summer course runs alongside the KMSS Summer Singing course.



Kent County Youth Orchestra (KCYO)

KCYO is for orchestral players in year 8 and above (maximum age 21) who play at grade 7 level or higher. Their summer course this year will take place at Benenden School during the first week of August.



If you would like to find out more about any of the county groups, how to join or where and when they perform or how to get tickets, visit www.kent-music.com/county-groups/ or contact us at countygrouops@kent-music.com

Meet all our County Groups on our YouTube channel:
www.youtube.com/@KentMusicUK

FAQs

Are auditions required?

Auditions are not required. Placement in groups will be made after careful consideration of the standard and experience of the student as indicated on the booking form together with the need to ensure instrumental and vocal balance. Experience and grades for courses indicate the level of ability required. It is not necessary to have taken grade exams but students must be studying at the level given.

What if school is still in session on the course dates?

Your child's head teacher may grant permission to attend Kent Music Summer School and generally head teachers are very keen to permit attendance. If your child is due to attend school when your course takes place, please ensure you inform your school in good time and follow their normal procedure for authorised absence (code B). School absence Code B covers approved educational activities and courses which take place away from the school site. We are always happy to talk with schools to answer any questions that they may have.

My child has special educational needs or a disability - can they still attend?

We aim to make courses accessible for all to attend. Please contact Kent Music to discuss your child's requirements before completing the application.

What is included in the fee?

Here is a list of some items covered by the fee: Tuition, music, music stands, accommodation, bedding, towels, food and drink (breakfast/lunch/dinner/three refreshment sessions per full day), pastoral team, nurse, student welfare officer, use of leisure facilities, sports team, free access to end of course performances. All courses are partially subsidised by a grant from Kent County Council, helping us make KMSS accessible to as many young musicians as possible.

What time do courses start?

Registration on the first day is between 9:00 and 10:30am. We will let you know of your specific registration time in advance.

FAQs

Who are the staff?

The Music Team of conductors, tutors, accompanists, vocal and instrumental coaches are experts in their field. A qualified child safeguarding officer, nurse and a team of experienced pastoral staff are present throughout. Our Pastoral Team are experienced in supporting young people during their stay ensuring their safety, comfort and well-being throughout. Pastoral team members stay in the same accommodation houses as the students so there is always someone on hand to help if needed.

We engage a Student Welfare Officer who remains on-site during all courses and is available should any student wish to talk with someone other than from the music or pastoral team. All Kent Music Summer School and Benenden School staff members have Full Disclosure DBS certificates and are current with Child Safeguarding training. In addition to an on-site nurse, many of the team have first aid training.

What if my child has another commitment during the course?

We understand sometimes there are existing commitments to school or for music exams where they may need to arrive late or be off-site for a time during the course. Please ask for an off-site/late arrival request form from kmss@kent-music.com

Can my child be non-residential?

It is our belief young musicians gain maximum benefit from being residential where they can join both the musical and social aspects of the course. If you prefer them not to stay overnight this can be arranged, however please bear in mind that you will need to drop-off at 8.45am and collect at 8.15pm each day except for the first morning and post-concert collection.

There is no reduction in fee for being non-residential. Please email kmss@kent-music.com if you would like them to attend on a non-residential basis.

FAQs

Why can't a full refund be given for withdrawal?

We must employ staff and give expected course attendance numbers approx. 6 weeks before the start of KMSS. This means that by 1st June, Kent Music is committed to financial outlay on your behalf for the booked place on course. For this reason, it is essential you read and understand the cancellation and refund terms to know your entitlement.

In exceptional circumstances e.g., student illness or accident, where a doctor and/or hospital certificate is provided to support the withdrawal, we will only retain the £35 deposit.

How do I access financial assistance?

We have a Financial Assistance scheme for those who need additional support to attend Kent Music activities, including lessons, groups, courses and Summer School. If you require financial assistance for Kent Music Summer School courses, please visit our Financial Assistance web page at www.kent-music.com/financial-assistance/. You will need to download a form specifically for County Groups courses and return it to our team - full instructions for this are on the web page.

For further information or if you find you do not automatically qualify for KM financial assistance, please contact Valerie Cordina, County Programmes Manager, at vcordina@kent-music.com. If you are unable to secure financial assistance for KMSS, a full refund of any associated fees paid will be given.

Is the food provided suitable for children with allergies or specific dietary requirements?

A wide selection of food is available at each of the daily meals –breakfast, lunch and dinner. There are a variety of milks available including almond, soya and hazelnut as well as skimmed and semi skimmed dairy milks. There is a separate toaster provided for gluten-free bread and there are gluten-free and vegetarian options available at all mealtimes. Food served at the counter is nut-free. All food is labelled with allergen symbols e.g., sesame, crustaceans, molluscs, and eggs.

FAQs

If you require a different diet, e.g., vegan, this can be provided as long as we are given sufficient notice. When booking, you will have the opportunity to let us know your requirements.

What is the accommodation like?

Benenden School is in a beautiful 240-acre parkland site in the heart of the Kent countryside and the school facilities are exceptional. Accommodation is mainly individual rooms with shared bathroom facilities. Catering is of the standard you would expect from this prestigious school. Breakfast, lunch and dinner are provided each full day as well as refreshments at the morning, afternoon and evening break times.

Leisure facilities include tennis courts and a varied range of indoor and outdoor supervised games and sports activities such as rounders, cricket and frisbee. There is also a small shop on site.

What do I need to bring with me?

You only need to bring your personal items for the length of your course. Bedding, food and towels will be provided. You will also need to bring your own instrument (if required for the course). If you already own instrument accessories, e.g. mute, please bring them with you. If you play a bowed string instrument, please bring spare strings. We do have access to a small allocation of instruments if you don't have your own.

Please contact kmss@kent-music.com when you make your application if you need us to provide an instrument. Instrument hire will incur a small additional cost which will be a maximum of £15.00 (depending on length of hire and instrument type). Instrument hire will be free of charge to students in receipt of financial assistance.

If you would like any further information or to discuss any FAQs, please get in touch at kmss@kent-music.com

How to Apply

Booking Procedure

Each booking will be processed on receipt of an online application form. To apply please visit www.kent-music.com/kmss or click the links in this brochure.

Bookings will be acknowledged within 7 working days of receipt. Once your booking is confirmed you will be sent an invoice for the deposit payment. A non-refundable deposit of £35 is required within 5 working days of receiving your invoice to secure your place. **Please do not make a payment until you have received your confirmation email and invoice.** If you do not pay the deposit within 5 working days of receiving the invoice, your place will be released and you will need to reapply

Early booking is strongly recommended to secure your place. If a course (or section of a course) is full, you will be advised that your booking is on a waiting list. You will be advised if a place becomes available. If Kent Music is unable to offer a place, all your related fees will be refunded.

Payment Procedure

You will receive an invoice for the non-refundable deposit with your booking confirmation, and we ask that this is paid on receipt to secure your place. The deposit makes up part of the total course fee.

An invoice for the remaining fee will be sent to you week beginning 29th April 2024. You will be able to pay this invoice in one lump sum or by instalments of your choice through your SpeedAdmin account. Course fees must be received in full no later than the 2nd July 2024.

If you would like to discuss an alternative payment plan, pay in instalments, or you are awaiting confirmation of financial assistance, please email kmss@kent-music.com

Terms and Conditions

Please visit our website at www.kent-music.com/terms-and-conditions/ for full Terms and Conditions. Summer School Terms and Conditions should be read in conjunction with Kent Music's General Terms and Conditions.

Financial Assistance

We can offer up to a 75% discount for those meeting specific financial criteria. For more information please visit www.kent-music.com/financial-assistance or refer to the FAQs on page 32.

Please note that an application for Financial Assistance should be submitted at the same time as your Summer School course application.

Joining Instructions

You will receive the course joining instructions no later than the end of June. These will give you final details on plans for the course, accessing the site, what to bring and more.

Cancellation Procedure and Refunds

Withdrawal by student

Notice to withdraw must be given in writing, either by letter or email to kmss@kent-music.com. The cancellation will be confirmed by email within 15 working days of receipt; the refund amount will be verified.

If a student is unable to attend a course the following refund policy will apply:

Withdrawal notification received by kmss@kent-music.com

- On or before 31/05/24 = Full refund (minus non-refundable deposit)
- Between 01/06/24 & 17/06/24 = 50% of full course fee
- Between 18/06/24 & 30/06/24 = 25% of full course fee
- On or after 01/07/24 = No refund

Please note: The refund policy applies to all registered students regardless of their date of registration or when/if payments have been made.

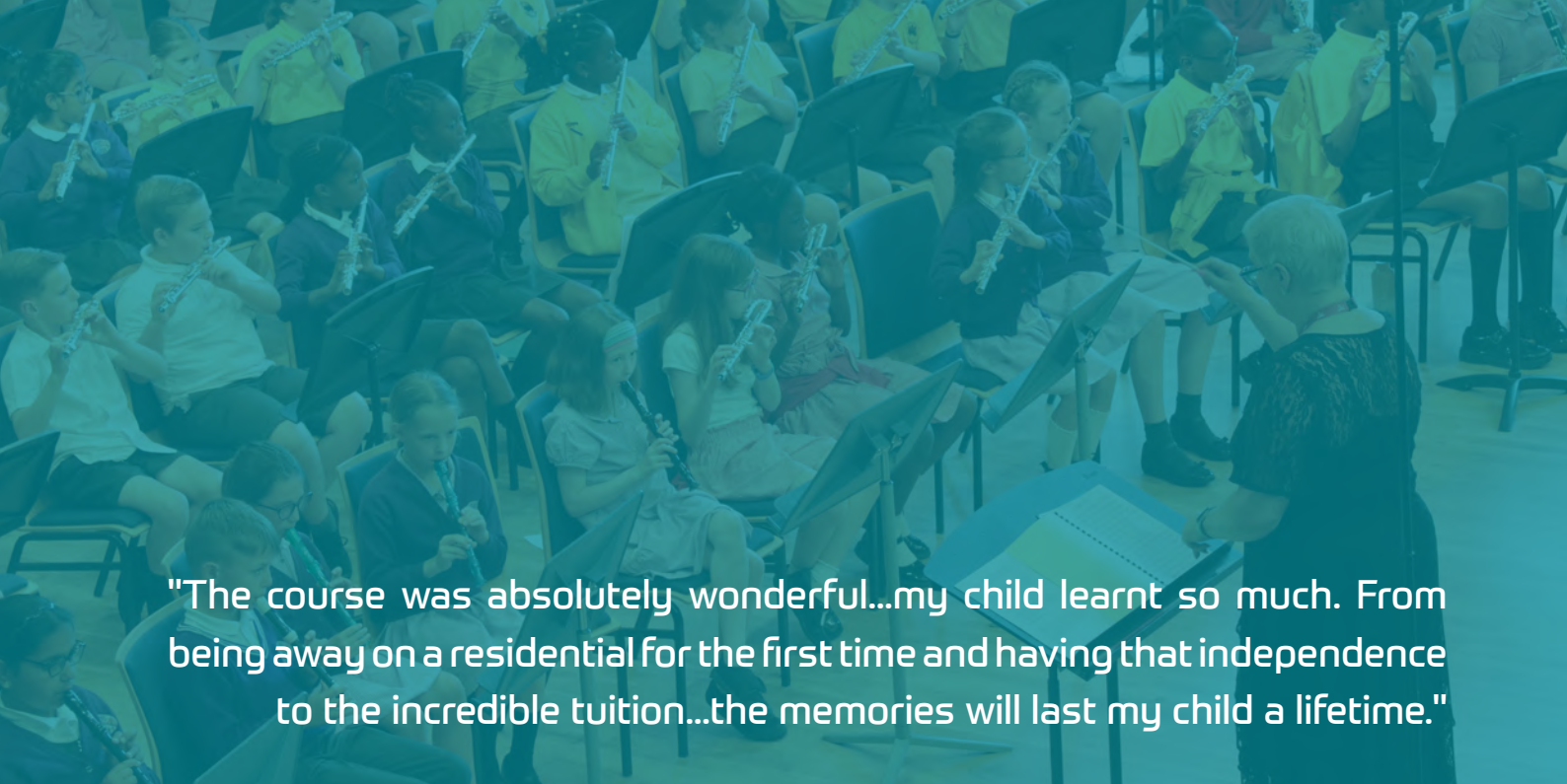
Withdrawal due to illness or accident

If a student is unable to attend due to illness or accident, we request you send us the doctor and/or hospital certificate to confirm. In this instance a refund, less £35.00 deposit will be processed. Please note, this applies to all medical conditions including COVID-19 related withdrawals.

Cancellation by Kent Music

Should Kent Music cancel any Kent Music Summer School courses, a full refund including the deposit will be processed.





"The course was absolutely wonderful...my child learnt so much. From being away on a residential for the first time and having that independence to the incredible tuition...the memories will last my child a lifetime."

Kent Music Summer School

01622 691212

kmss@kent-music.com

www.kent-music.com

@kentmusicuk 

@KentMusicUK



@KentMusicSummerSchool



@KentMusic

